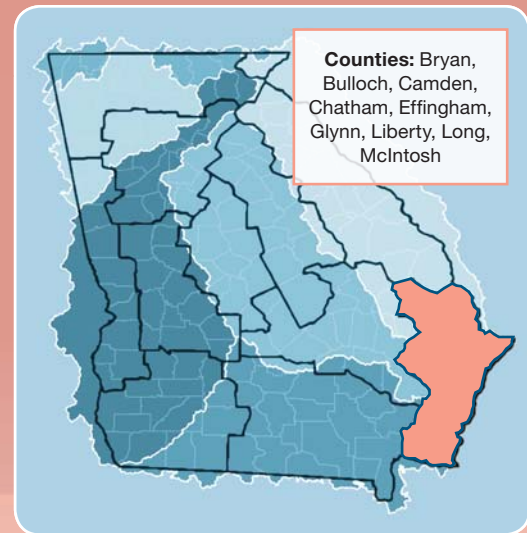


# COASTAL REGION

## BACKGROUND

The 2004 Comprehensive State-wide Water Management Planning Act authorized the development of the State Water Plan. The State Water Plan, which was adopted by the General Assembly in 2008, calls for:

- the preparation of regional water plans;
- the establishment of ten regional water planning councils to prepare the plans; and,
- the Georgia Environmental Protection Division (EPD) with providing technical assistance to the councils including contractor support, guidance, resource assessments and forecasts.



## COUNCIL ACTIVITIES, 2009-2011

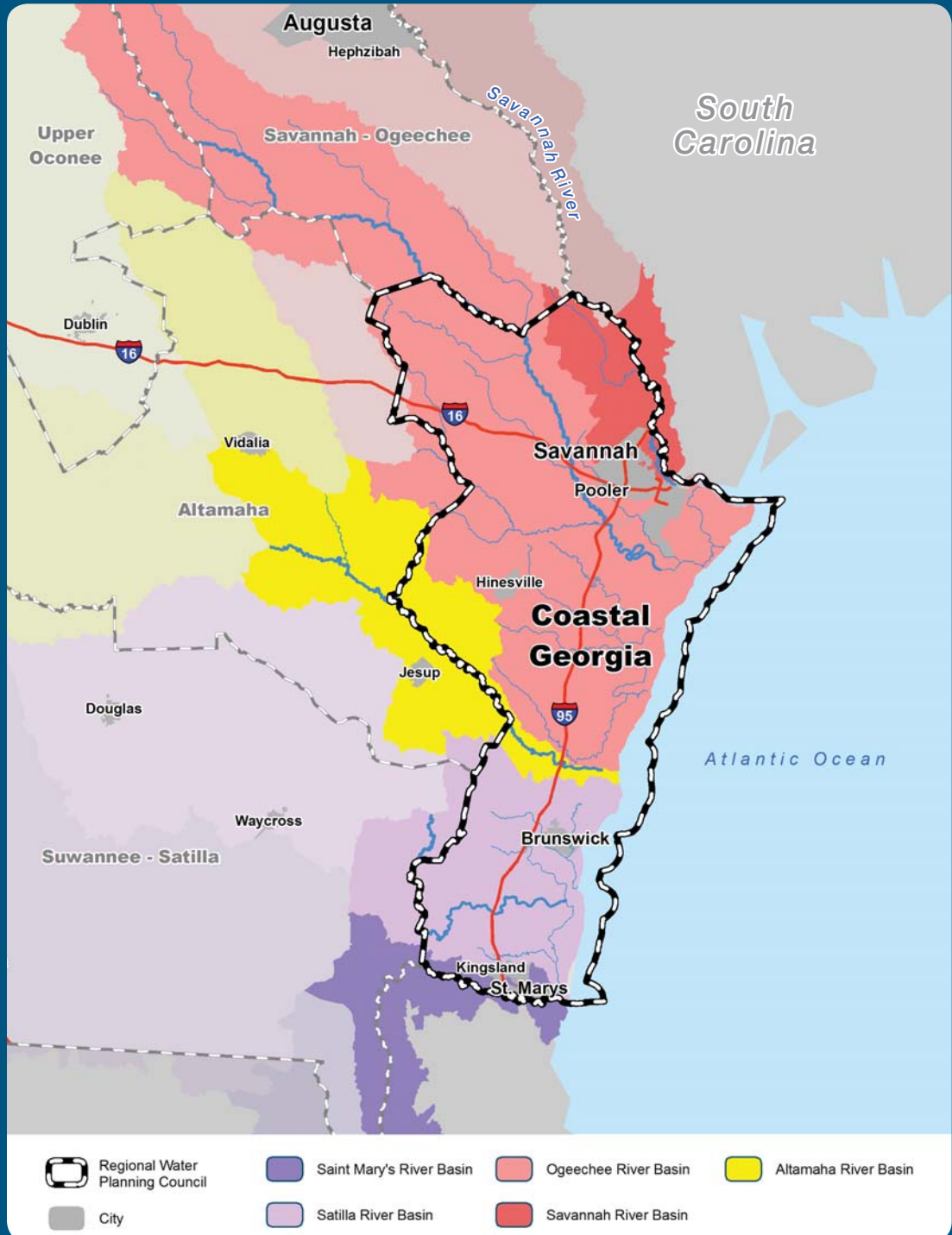
| ACTIVITY                                    | STATUS   |
|---|--|
| Council Meetings                            | 5 in 2009 / 4 in 2010 / 2 in 2011  |
| Council Leadership                          | <b>Benjamin Thompson, Chair</b> and <b>Tom Ratcliffe, Vice Chair</b>   |
| Memorandum of Agreement                     | Executed with Department of Community Affairs and EPD  |
| Vision and Goals                            | Adopted  |
| Public Involvement Plan                     | Adopted  |
| Subcommittees                               | Vision and Goals, Water and Wastewater Forecasting, Public Involvement Plan, Management Practices, Plan Drafting |
| Draft Water Resource Assessments            | EPD presented, January 2010  |
| Draft Water and Wastewater Demand Forecasts | EPD presented, March-June 2010   |
| Management Practices                        | Select, evaluate, refine, finalize, June 2010-May 2, 2011  |
| Initial Recommended Regional Water Plan     | Submit to EPD, May 2, 2011   |
| Address Public Comments                     | Review and revise based on public comments received  |
| Final Recommended Regional Water Plan       | Submit to EPD Director for adoption, September 30, 2011  |

## KEY WATER RESOURCE ISSUES BEING ADDRESSED BY THE COUNCIL

1. Long-term sustainable water supplies for municipal and industrial growth in the region while protecting the unique coastal environment
2. Current and potential future groundwater withdrawals in and around Effingham, Chatham, Bryan and Liberty counties for future water supply
3. Integration with ongoing efforts including salt water intrusion, Savannah River Total Maximum Daily Load, Coastal Region Plan, demands for water upstream of the region, and interstate activities with South Carolina and Florida
4. Low dissolved oxygen in Savannah and Brunswick Harbors and other water quality issues
5. Low flow conditions during drought in the Ogeechee River Basin



# KEY WATER FEATURES OF THE COASTAL REGION



## COASTAL COUNCIL MEMBERS

- DENNIS BAXTER**  
Bloomingdale, Chatham County
- FRED G. BLITCH**  
Statesboro, Bulloch County
- CHRIS BLOCKER**  
Port Wentworth, Chatham County
- KAY W. CANTRELL**  
St. Simons, Glynn County
- FRANK E. FEILD**  
Darlen, McIntosh County
- RICK GARDNER**  
Pembroke, Bryan County
- JOHN F. GODBEE**  
Brooklet, Bulloch County
- WILLIAM K. GUTHRIE**, Alternate  
Savannah, Chatham County
- DUANE HARRIS**, Alternate  
St. Simons, Glynn County
- BILLY HATCHER**  
Statesboro, Bulloch County
- DON HOGAN**  
Brunswick, Glynn County
- MICHELLE L. LIOTTA**  
Rincon, Effingham County
- REGINALD S. LOPER**  
Springfield, Effingham County
- JOHN D. MCIVER**  
Riceboro, Liberty County
- MICHAEL J. MELTON**  
Richmond Hill, Bryan County
- RANDAL MORRIS**  
Brunswick, Glynn County
- PHIL ODOM**, Alternate  
Hinesville, Liberty County
- KEITH F. POST**  
St. Marys, Camden County
- THOMAS RATCLIFFE**, Vice Chair  
Hinesville, Liberty County
- GEORGE T. SAMMONS**  
St. Simons, Glynn County
- MARK V. SMITH**  
Savannah, Chatham County
- LARRY M. STUBER**  
Savannah, Chatham County
- JAMES THOMAS**  
Hinesville, Liberty County
- BENJAMIN THOMPSON**, Chair  
Statesboro, Bulloch County
- BRYAN THOMPSON**  
Brunswick, Glynn County
- HORACE WALLER**  
Bloomingdale, Chatham County
- MARKY WATERS**  
Ludowici, Long County
- ROGER A. WEAVER**  
St. Marys, Camden County
- REP. CECILY HILL**  
(Ex-Officio)
- SEN. ERIC JOHNSON**  
(Ex-Officio)

## CURRENT WATER DEMAND

TOTAL = 568 MGD

Note: For 2005, the Coastal Georgia region total thermoelectric water demands were 309 MGD and total returns were 303 MGD.

